

REPORT LAUNCH

FEBRUARY 21, 2018



WELCOME

Stewart Kwoh, Esq.

*President and Executive Director
Asian Americans Advancing Justice - Los Angeles*

WELCOME

Hon. Lily Lee Chen

WELCOME

Gilbert Tong

First Vice President, Resident Director

Bank of America Merrill Lynch



WELCOME

Sophie Horiuchi-Forrester

AAPJ Statewide Lead, San Jose Metro Manager

AARP California



WELCOME

Jeffer Giang

Research Analyst

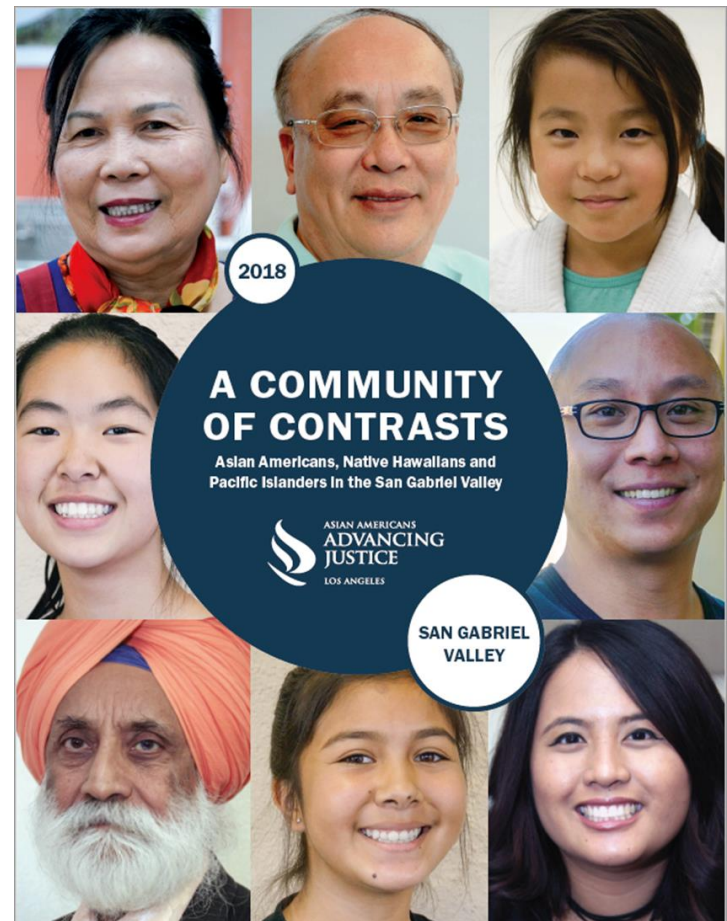
Asian Americans Advancing Justice – Los Angeles



OVERVIEW

PURPOSE

- Promotes a better understanding of Asian American, Native Hawaiian and Pacific Islander (NHPI) communities
 - Includes disaggregated data on Asian American groups
- Makes critical data from a variety of government, academic sources more accessible to key stakeholders



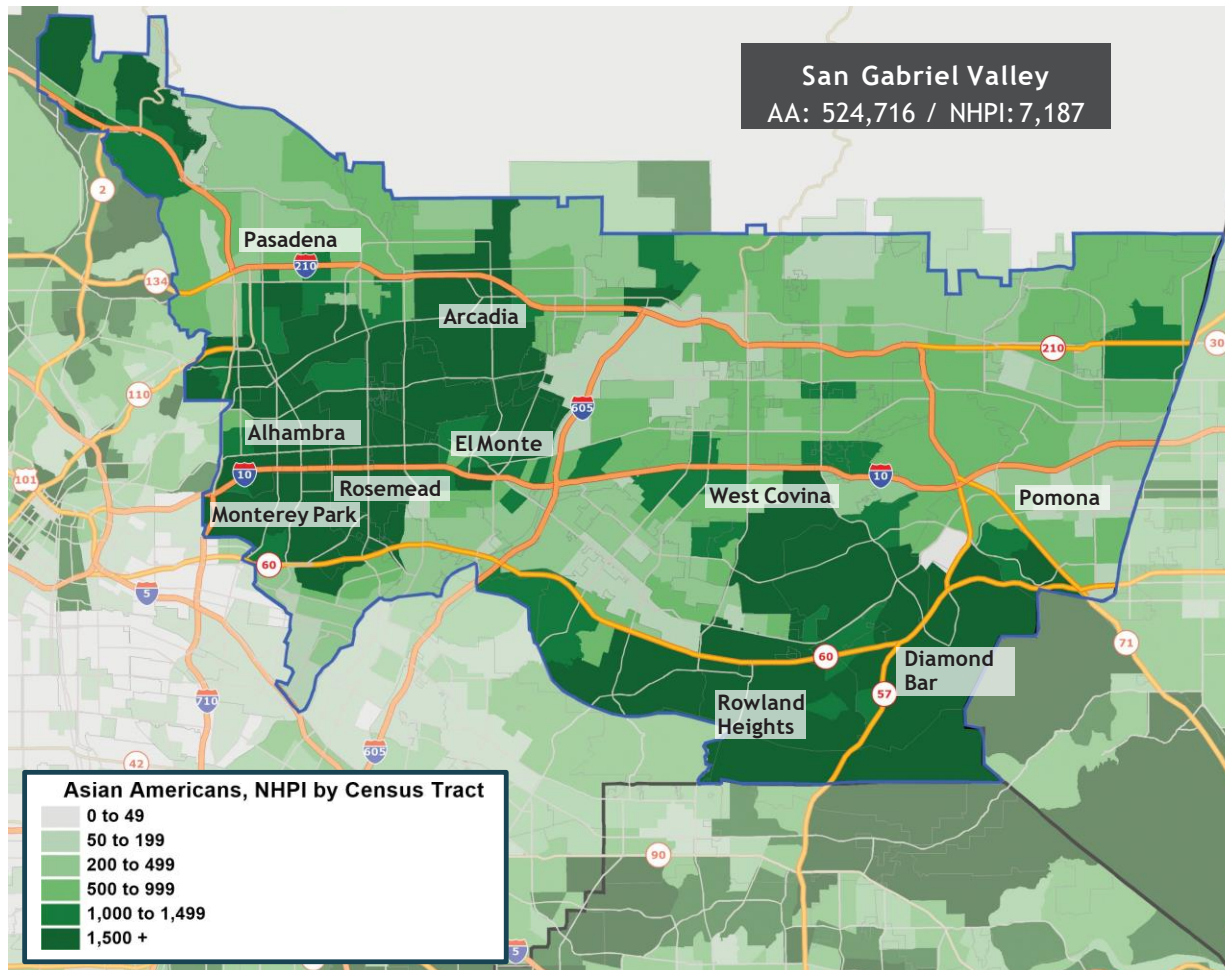
OVERVIEW THE DATA

- U.S. Census Bureau
 - 2010 Census
 - American Community Survey
 - Survey of Business Owners
 - California Environmental Protection Agency

...and many other statewide and local sources

OVERVIEW

ASIAN AMERICANS, NHPI IN THE SGV





The Asian American population
in the **San Gabriel Valley**
is **larger** than it is in **42** states.

Over ***HALF A MILLION*** Asian Americans
and over **7,000** NHPI live in the SGV.

U.S. Census Bureau, 2010, Census SF1, Table P6.

OVERVIEW

ASIAN AMERICANS, NHPI IN THE SGV

POPULATION BY RACE AND HISPANIC ORIGIN

San Gabriel Valley 2010, *Ranked by Population*

RACE AND HISPANIC ORIGIN	NUMBER	%
Latino	855,755	46%
Asian American	524,716	28%
White	398,740	22%
Black or African American	81,607	4%
AIAN	26,061	1%
NHPI	7,187	0.4%
Total Population	1,846,796	100%

U.S. Census Bureau, 2010, SF1, Tables P5 and P6. Note: Figures for each racial group include both single race and multi-racial people, except for White, which is single race, non-Latino. Figures do not sum to total.

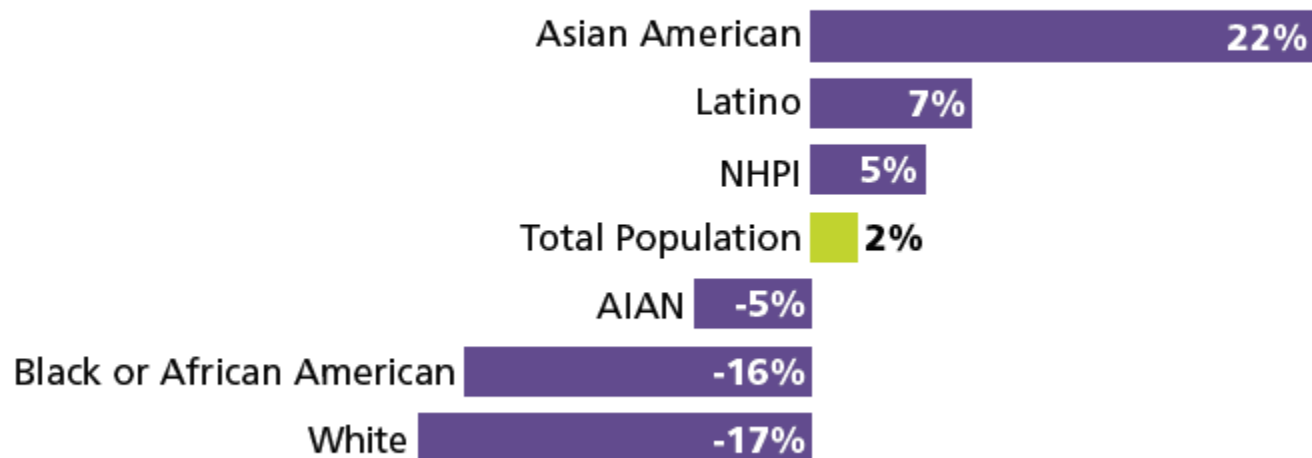
KEY FINDINGS

ASIAN AMERICANS, NHPI IN THE SGV

The region's large Asian American population continues to grow.

POPULATION GROWTH BY RACE AND HISPANIC ORIGIN

San Gabriel Valley 2000 to 2010



U.S. Census Bureau, 2000 Census SF1, Tables P8 and P9; 2010 Census SF1, Tables P5 and P6.

DID YOU KNOW?

The San Gabriel Valley's
Asian American *older adults* population
increased **71%** between 2000 and 2010,
making it the fastest-growing segment
of the region's Asian American population.



OVERVIEW

ASIAN AMERICANS, NHPI IN THE SGV

ASIAN AMERICAN POPULATION, GROWTH

by Top 15 Cities, San Gabriel Valley 2000 to 2010,
Ranked by Population

CITY	NUMBER	%	GROWTH
Alhambra	45,395	55%	8%
Monterey Park	41,284	68%	8%
Arcadia	34,416	61%	38%
Rosemead	33,107	62%	24%
Diamond Bar	30,478	55%	21%
Rowland Heights	30,088	61%	18%
El Monte	29,188	26%	31%
West Covina	29,177	28%	14%
San Gabriel	24,672	62%	23%
Pasadena	22,513	16%	49%
Hacienda Heights	20,891	39%	4%
Temple City	20,412	57%	52%
Walnut	19,258	66%	11%
Pomona	14,312	10%	17%
Baldwin Park	11,190	15%	20%

NHPI POPULATION, GROWTH

by Top 15 Cities, San Gabriel Valley 2000 to 2010,
Ranked by Population

CITY	NUMBER	%	GROWTH
Pomona	681	0.5%	2%
West Covina	520	0.5%	0.4%
Pasadena	476	0.3%	14%
Diamond Bar	335	0.6%	29%
Alhambra	308	0.4%	4%
Hacienda Heights	290	0.5%	16%
El Monte	282	0.2%	1%
Rowland Heights	271	0.6%	-28%
Covina	255	0.5%	5%
Glendora	222	0.4%	25%
Altadena	214	0.5%	60%
Azusa	202	0.4%	-6%
Arcadia	191	0.3%	-24%
Montebello	190	0.3%	31%
Baldwin Park	178	0.2%	-12%

U.S. Census Bureau, 2000 Census SF1, Table QT-P6; 2010 Census SF1, Table QT-P6.

OVERVIEW

ASIAN AMERICANS, NHPI IN THE SGV

Majority Asian American cities include:

- Monterey Park (68%)
- Walnut (66%)
- San Gabriel (62%)
- Rosemead (62%)
- Rowland Heights (61%)
- Arcadia (61%)
- Temple City (57%)
- San Marino (56%)
- Diamond Bar (55%)
- Alhambra (55%)
- East San Gabriel (52%)
- South San Gabriel (52%)

U.S. Census Bureau, 2000 Census SF1, Table QT-P6; 2010 Census SF1, Table QT-P6.

OVERVIEW

GROWING DIVERSITY

POPULATION BY ETHNIC GROUP

San Gabriel Valley 2010

ETHNIC GROUP	NUMBER
Chinese (except Taiwanese)	266,701
Filipino	72,272
Vietnamese	54,647
Korean	37,804
Taiwanese	32,450
Japanese	29,276
Indian	17,584
Thai	6,763
Cambodian	6,224
Indonesian	6,192
Burmese	3,589
Native Hawaiian	2,132
Pakistani	2,048

ETHNIC GROUP	NUMBER
Laotian	1,384
Samoaan	1,141
Sri Lankan	1,100
Malaysian	779
Guamanian or Chamorro	650
Bangladeshi	461
Nepalese	214
Tongan	172
Fijian	132
Hmong	131
Marshallese	13

U.S. Census Bureau, 2010 SF1, Table PCT7 and PCT10;
2010 Census SF2, Table PCT1.

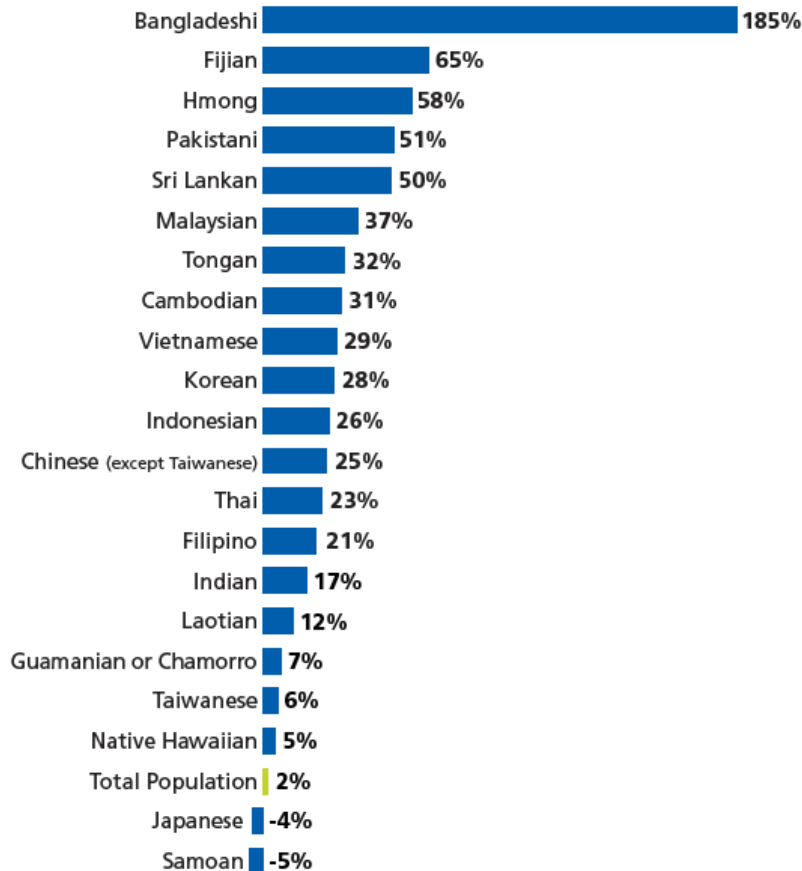
Over half of the county's Chinese, Vietnamese, Taiwanese, and Burmese American populations live in the San Gabriel Valley.

OVERVIEW

GROWING DIVERSITY

POPULATION GROWTH BY ETHNIC GROUP

San Gabriel Valley 2000 to 2010



Among Asian American ethnic groups, South Asians are among the region's fastest growing, mirroring trends countywide.

OVERVIEW

- Over 67% of Asian Americans and 28% NHPI in the San Gabriel Valley are immigrants.
- Approximately 58,000 undocumented Asian Americans live in the San Gabriel Valley.

OVERVIEW

CONTRIBUTIONS - BUSINESSES

BUSINESSES

by Race and Hispanic Origin, San Gabriel Valley 2012,
Ranked by Number of Businesses

RACE AND HISPANIC ORIGIN	ALL BUSINESSES	REVENUES (\$1,000s)	EMPLOYEES (NUMBER)	ANNUAL PAYROLL (\$1,000s)
Asian American	81,654	\$26,357,891	91,160	\$2,740,156
Latino	52,504	\$4,162,994	13,720	\$403,202
White	52,345	\$33,786,656	156,889	\$6,066,708
Black or African American	5,581	\$252,936	968	\$35,545
AIAN	1,252	\$32,989	—	—
NHPI	147	\$145	—	—
Total	194,650	\$74,588,294	306,720	\$10,844,851

U.S. Census Bureau, 2012 Survey of Business Owners, Table SB1200CSA01. Note: Some business owners did not report a race. Businesses are categorized based on the race of the majority owner(s). Majority owners who report more than one race or ethnicity are counted more than once. Figures do not sum to total. Total includes publicly held businesses. Some data are not reported due to suppression or large standard error.

Asian American and NHPI businesses in the region employed over 91,000 people, dispensing over \$2.7 billion in payroll.

OVERVIEW

CONTRIBUTIONS – CIVIC ENGAGEMENT

- Approximately 172,000 Asian Americans are registered to vote, making up 20% of the region's total voter registration.
- During the same election, Asian American voter registration exceeded the margin of victory in United States Congressional Districts 27 (Chu) and 39 (Royce), California State Senate District 29 (Newman), and California State Assembly Districts 49 (Chau) and 55 (Chen).

Our communities
help drive the
economy in the
San Gabriel Valley,
but have needs
that often fly
under the radar.



KEY FINDINGS

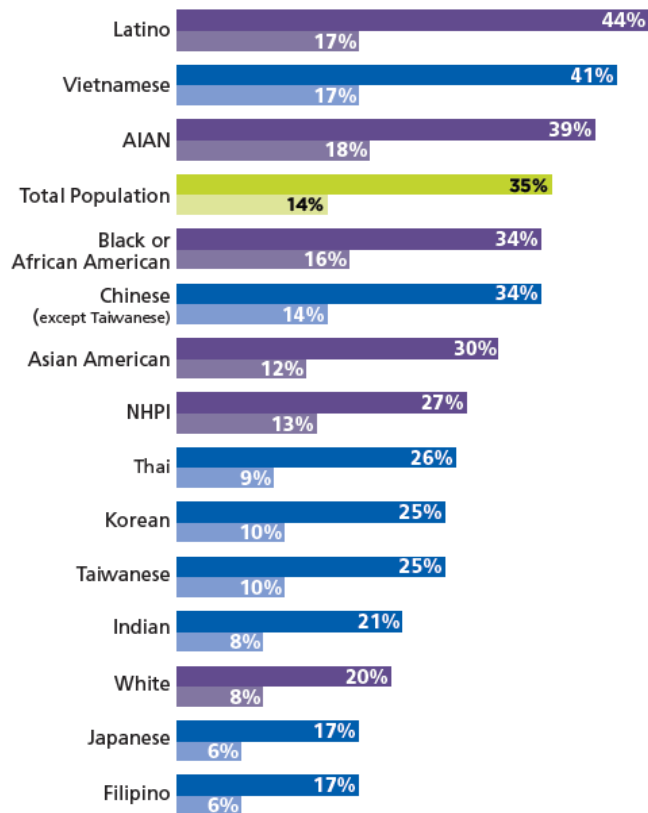
- Poverty and Worker's Rights
- Affordable Housing
- Environmental Justice

KEY FINDINGS

POVERTY AND WORKER'S RIGHTS

POVERTY AND LOW-INCOME

by Race, Hispanic Origin, and Ethnic Group, San Gabriel Valley 2011–2015,
Ranked by Percent Low-Income



U.S. Census Bureau, 2011–2015 American Community Survey 5-Year Estimates,
Table C17002.

Top: Low-income
Bottom: Poverty

Over 66,700 Asian Americans and nearly 1,000 NHPI in the San Gabriel Valley live below the poverty line; nearly a third of Asian Americans in the region are low-income.

DID YOU KNOW?

Nearly **1 in 6**
Asian American workers
in the *San Gabriel Valley*
are employed in the
service-industry.



U.S. Census Bureau, 2011-2015 American Community Survey 5-Year Estimates, Selected Population Table, Table C24010.
Street sign photo taken by M. Jamie Watson.

KEY FINDINGS

AFFORDABLE HOUSING

Asian Americans in the San Gabriel Valley are struggling with rising housing costs.

- Between 2015 and 2016, the average rent in the San Gabriel Valley increased 4.9%.
- In 2016, the median home price rose to \$662,400, compared to \$559,000 countywide.

KEY FINDINGS

AFFORDABLE HOUSING

DID YOU KNOW?

Nearly **69,000** Asian Americans in the San Gabriel Valley are ***housing cost burdened***, spending 30% or more of their household income on housing costs.



KEY FINDINGS

AFFORDABLE HOUSING

Nearly 69,000 Asian Americans in the region are burdened by the high cost of housing.

- Over 52% of Asian American renters and 49% of Asian American homeowners with a mortgage spend 30% or more of their household income on housing costs.
- Asian Americans have lower homeownership rates than Whites (63% to 68%), while only 56% of Pacific Islanders in the region are homeowners.

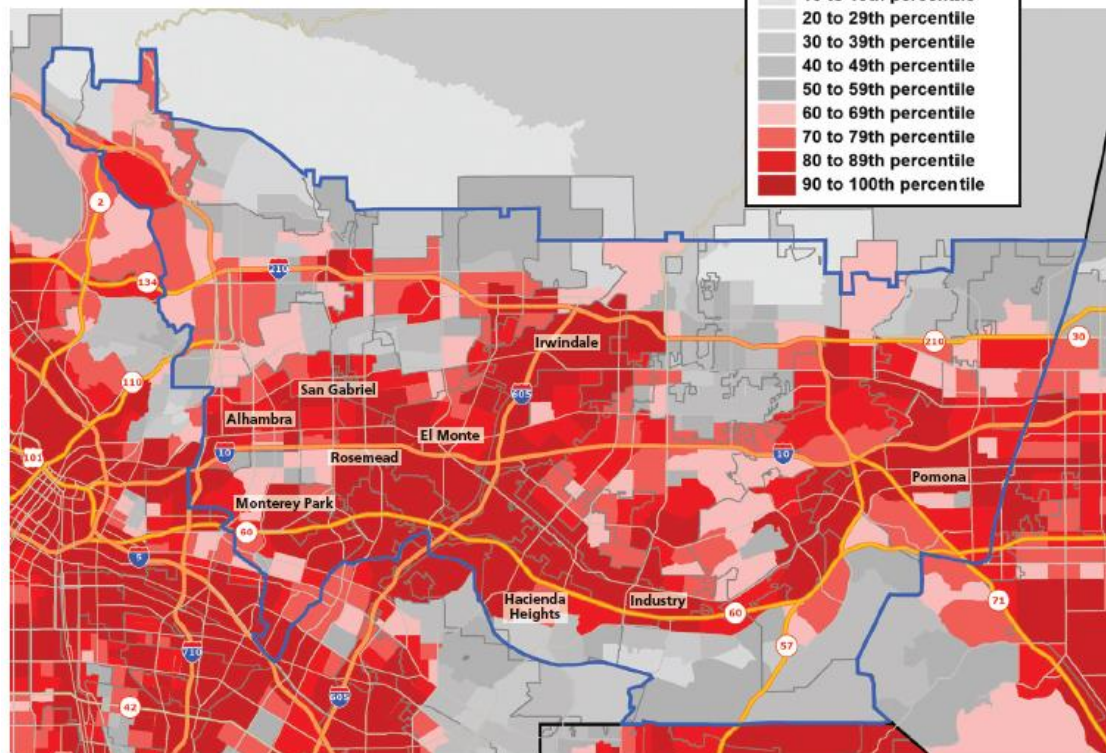


KEY FINDINGS

ENVIRONMENTAL JUSTICE

POLLUTION BURDEN

San Gabriel Valley 2005–2016



Over **25%** of the San Gabriel Valley is **severely polluted**, with **1 in 4 census tracts** at or above the 90th percentile for pollution burden statewide.

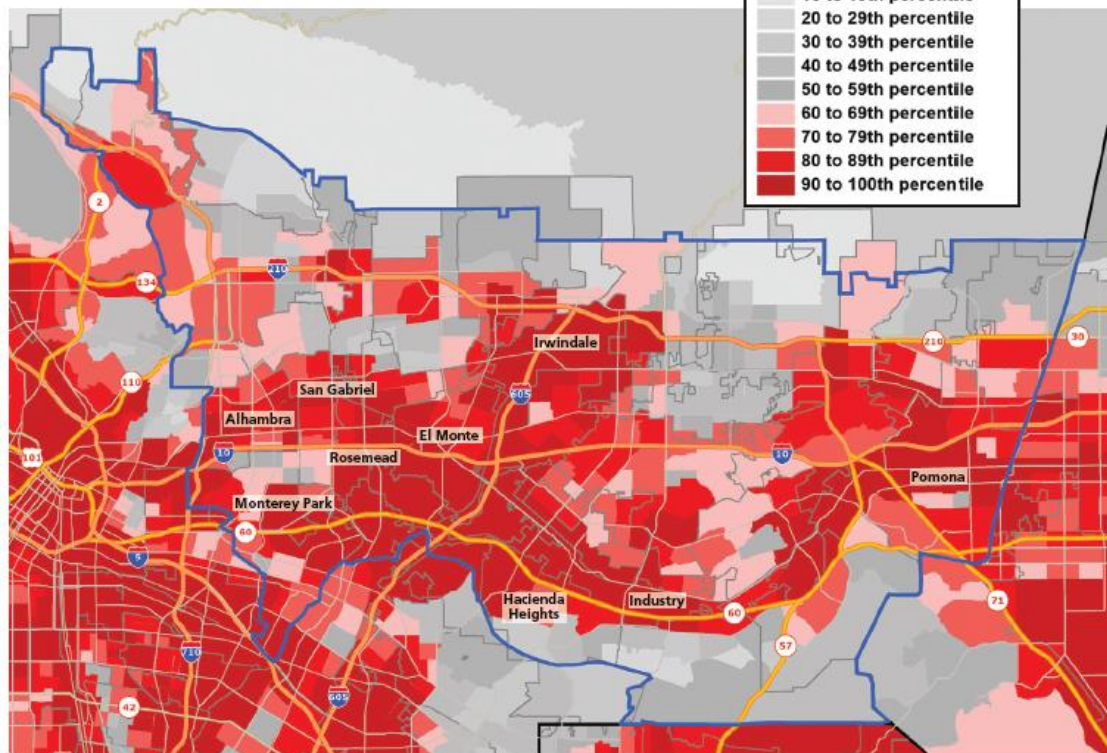
California Office of Environmental Health Hazard Assessment (OEHHA), CalEnviroScreen 3.0, January 2017. Pollution Burden scores measure the aggregate level of pollution in a census tract relative to others statewide and are derived from the average percentiles across seven exposure and five environmental effects indicators. The darkest shade represents census tracts whose pollution burden is higher than 90% of census tracts statewide.

KEY FINDINGS

ENVIRONMENTAL JUSTICE

POLLUTION BURDEN

San Gabriel Valley 2005–2016



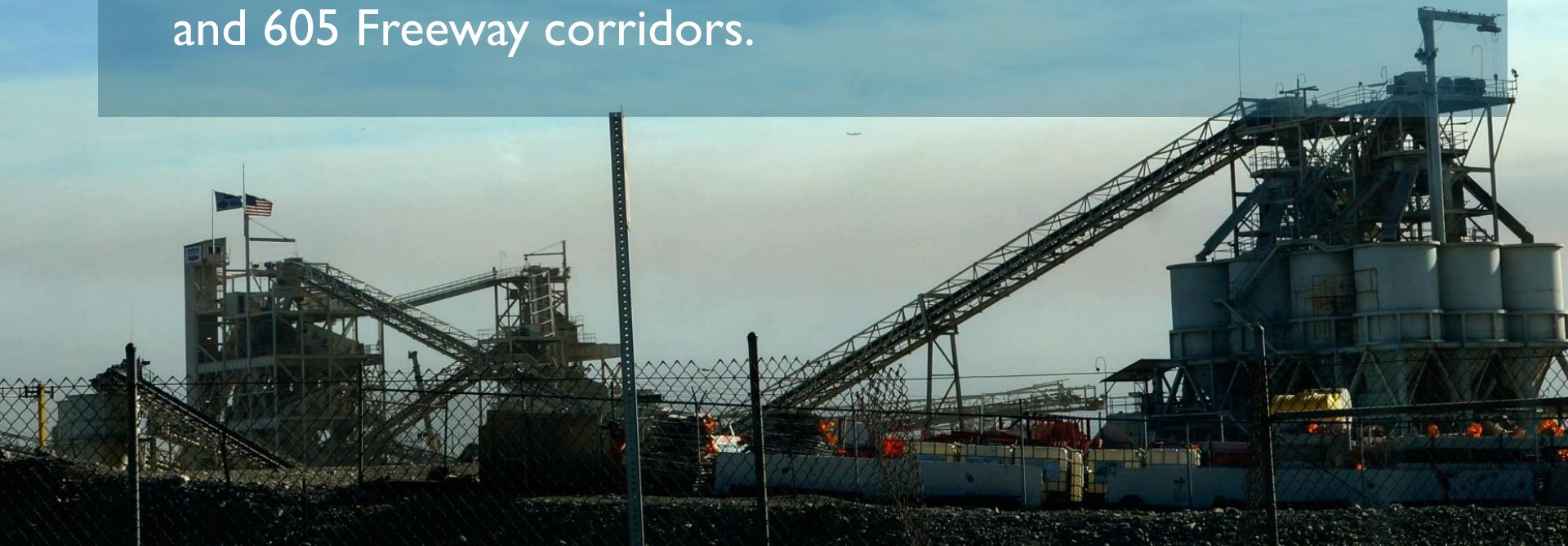
California Office of Environmental Health Hazard Assessment (OEHHA), CalEnviroScreen 3.0, January 2017. Pollution Burden scores measure the aggregate level of pollution in a census tract relative to others statewide and are derived from the average percentiles across seven exposure and five environmental effects indicators. The darkest shade represents census tracts whose pollution burden is higher than 90% of census tracts statewide.

Approximately 70% of census tracts in El Monte, 46% of census tracts in Rosemead, and 40% of census tracts in San Gabriel are severely polluted.

KEY FINDINGS

ENVIRONMENTAL JUSTICE

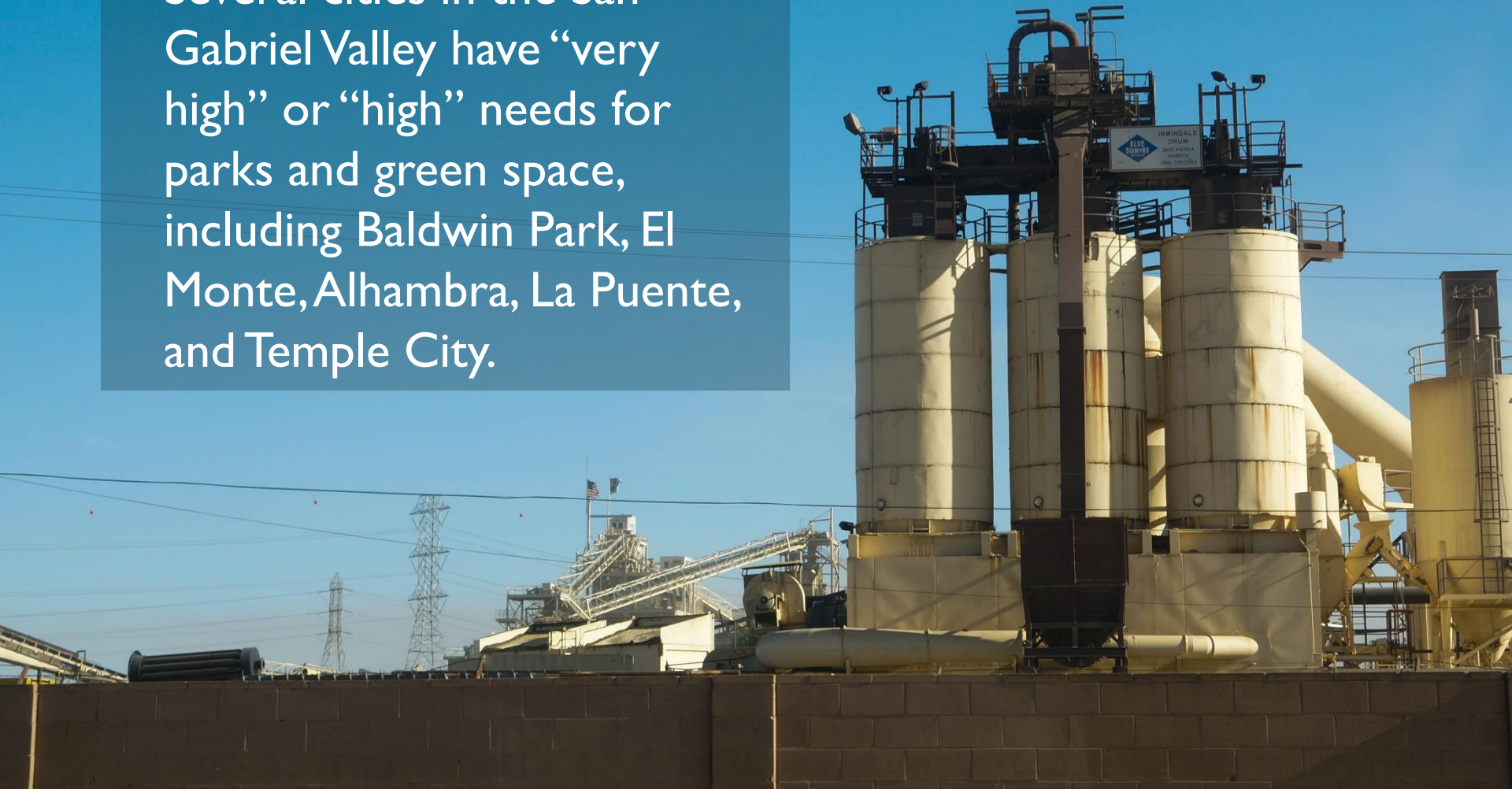
- Particular pollution challenges facing the region include the release of toxic chemicals from industrial facilities south of the 10 Freeway; drinking-water contamination in Alhambra, Arcadia, Irwindale, Monterey Park, Temple City, and West Covina; and exhaust from vehicle traffic along the 10, 60, 210, and 605 Freeway corridors.



KEY FINDINGS

ENVIRONMENTAL JUSTICE

- Several cities in the San Gabriel Valley have “very high” or “high” needs for parks and green space, including Baldwin Park, El Monte, Alhambra, La Puente, and Temple City.



KEY FINDINGS

POLICY RECOMMENDATIONS

- Policy makers should ensure a minimum wage and overtime pay for all workers, making sure workers both know their rights and have the help they need to file claims challenging wage theft, overtime, and other labor law violations.

KEY FINDINGS

POLICY RECOMMENDATIONS

- More affordable housing is needed. Policy makers should work to establish local rent controls and eliminate regulations like the Cost-Hawkins Rental Housing Act that limit the effectiveness of those controls.

KEY FINDINGS

POLICY RECOMMENDATIONS

- Local jurisdictions should better understand and address environmental hazards to ensure the health of San Gabriel Valley residents.

FIND OUR REPORT ONLINE

Publications are available in print or on the Asian Americans Advancing Justice – Los Angeles website, where they can be downloaded or printed free of charge.

www.advancingjustice-la.org/demographics



PANEL DISCUSSION

- Julie Su, *California Labor Commissioner*
- Annie Fox, *LA Voice*
- Scott Chan, *API Forward Movement*
- Alexander Eng, *Bank of America Merrill Lynch*
- Julie Lam, *U.S. Census Bureau*

Moderator: Daniel Ichinose, *Advancing Justice-LA*