





Letter from the Founder & Board Chair

Since our founding in 1983, Asian Americans Advancing Justice - Los Angeles (Advancing Justice-LA) has been filling significant legal and advocacy gaps of diverse Asian American, Native Hawaiian, and Pacific Islander (AANHPI) communities. In the midst of escalating threats against immigrants, Muslims, people of color, and low-income families, we continue to provide these much-needed services, develop community leaders, and advance policy and litigation work that elevates equity, inclusion, and justice for the most vulnerable in our community.



This year, Pat and I were honored to receive Advancing Justice-LA's first ever Lifetime Achievement Award. We appreciate the recognition for helping build Advancing Justice-LA, fighting for AANHPIs, and advancing social justice for all communities. We are proud to have played a role in pulling together the people, raising funds, and growing an organization that continues to make an impact!

This has also been a significant year for Advancing Justice-LA as I transitioned from my role from our first and only President & Executive Director to Founder. After dedicating 35 years to building, leading, and guiding our organization, I am focusing my responsibilities on fundraising and coalition building, which creates an opportunity for new leadership to guide the organization into the future. The board has hired an interim Executive Director, Syla Obagi, who brings deep experience in programs, management, administration, and finance. We are confident in Syla's ability to build upon the strengths of Advancing Justice-LA. As the Board of Directors launches our search for a permanent CEO in the fall, we are paving the way for a permanent CEO who can continue the organization's leadership role locally and nationally.



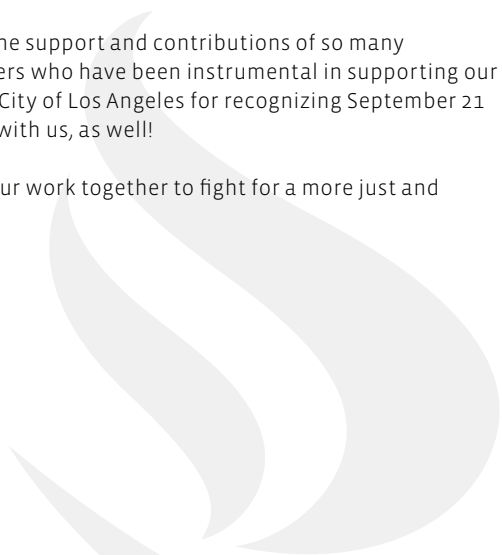
As we reflect on the milestones of the past 35 years, we are humbled by the support and contributions of so many individual, corporate, foundation, staff, volunteer, and community partners who have been instrumental in supporting our growth and service to the communities we work with. We also thank the City of Los Angeles for recognizing September 21 as Advancing Justice-LA Day and are grateful to know that LA celebrates with us, as well!

Thank you for your ongoing support and we look forward to continuing our work together to fight for a more just and equitable future for all communities.

SINCERELY,

STEWART KWOH

NITA SONG





2018 Finances



Assets

Cash & Cash Equivalents	\$1,236,212
Long-term Investments	\$5,776,857
Grants + Pledges Receivables	\$6,452,723
Property + Equipment, Net	\$2,628,268
Deposits	\$29,688
TOTAL ASSETS	\$16,123,748

Liabilities

Accounts Payable	\$252,580
Accrued Employee Benefits	\$412,312
Grants Payable	\$866,246
Custodial Funds	\$8,441
TOTAL LIABILITIES	\$1,539,579

Net Assets

Unrestricted	\$6,526,903
Temporarily Restricted	\$7,057,266
Permanently Restricted	\$1,000,000
TOTAL NET ASSETS	\$14,584,169

Total Liabilities and Net Assets:

\$16,123,748



Our 2018 Reach and Impact

100% of Your Support Makes an Impact

1,639

youth & parents served through school-based programming, leadership development training, and community engagement events

1,094

citizenship applicants assisted by Advancing Justice-LA

14,910

individuals enrolled in state and local health coverage and safety net programs by Advancing Justice-LA and Health Justice Network partners

422

students enrolled in ESL/Civics courses

7,596

calls resolved through 8 Asian Language Legal Intake Project helplines in 12 languages/dialects

700

individuals screened for immigration relief

526

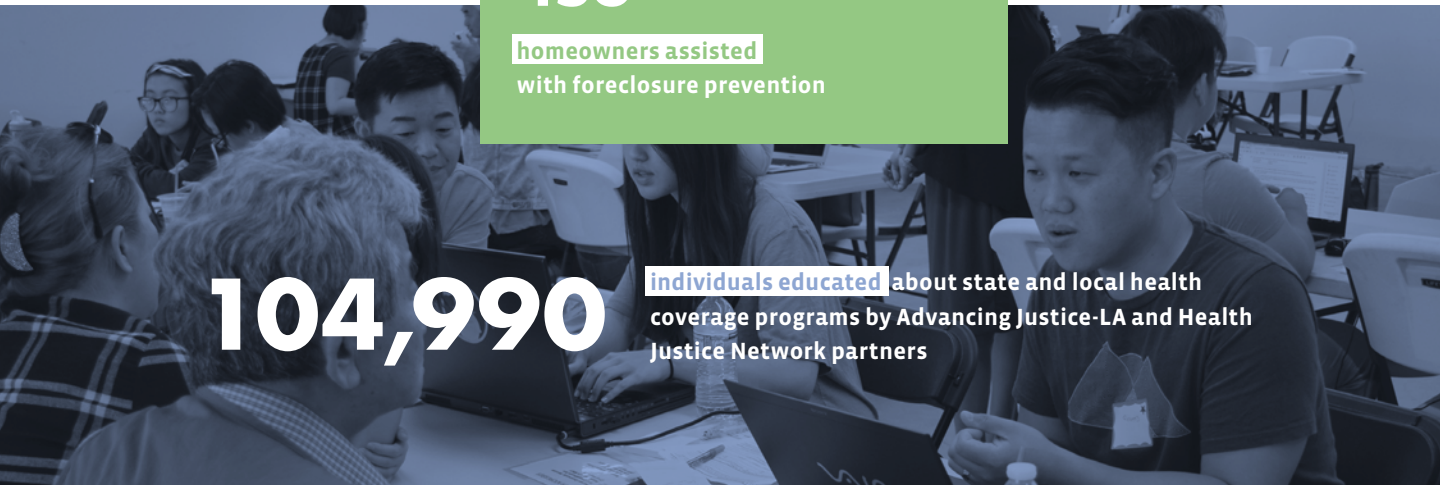
clients served through our newly launched Domestic Violence Restraining Order Clinic

456

homeowners assisted with foreclosure prevention

104,990

Individuals educated about state and local health coverage programs by Advancing Justice-LA and Health Justice Network partners



Health Access

Over 216,000 public comments

were submitted in response to the proposed public charge rulemaking changes, with over 22,000 from AAPI communities. Advancing Justice-LA and our affiliate partners mobilized supporters to submit **over 1,000 of these comments** to protect immigrant community members' ability to access public benefits.

We continue to prioritize health access for all immigrants regardless of status. With a diverse coalition of health and immigrant advocates, we helped lay the foundation for the expansion of **full-scope Medi-Cal** to all young adults, with the proposed state budget for 2019-2020 including a proposal for Health4All for young adults **aged 19-26.**



60,595

calls were completed during 19 days of phone banking during the 2018 election cycle. The calls, made in 5 languages, were to educate community members about the voting process and encourage them to cast their ballot.

769 volunteers, interns, and pro-bono attorneys helped Advancing Justice-LA by contributing over 27,905 hours - worth over

\$7.6 million

Census

We successfully advocated for state funds so community-based organizations can conduct **Census outreach and education** for hard-to-count communities. We also continue to advocate for **increased language assistance** for hard-to-count Census populations.

11 states

We have cultivated relationships with 11 states through our **Voting Rights Partnership** which include: Arizona, Ohio, North Carolina, Washington, Michigan, Georgia, Illinois, Hawaii, Minnesota, Nevada and Oregon.

Education Equity

Through our Advancing Justice-CA work (a partnership between Advancing Justice-LA and Advancing Justice-ALC in San Francisco), we engaged in **education and advocacy initiatives** that resulted in new requirements for schools and local education agencies to develop bullying prevention plans and train educators on bullying.

We continue our state level advocacy to request the increased and ongoing reinvestment of the **College Readiness Block Grant.** We have created materials to train community members and advocates, and conducted our annual Advocacy Day in Sacramento, which brought nearly **60 students and parents** to the state capitol to advocate with legislators for education equity and racial justice. Locally, we supported the development of the AANHPI AMEMSA Equity Roundtable, in order to uplift the needs our communities' students and families.



Direct Services

PROVIDING FREE LEGAL ASSISTANCE, REPRESENTATION, AND REFERRALS TO LOW-INCOME AND LIMITED ENGLISH-SPEAKING INDIVIDUALS.

Advancing Justice-LA helps thousands of immigrants with a range of legal issues including immigration, citizenship, and domestic violence and family law. Through toll-free helplines, we serve clients in twelve languages and dialects.

We provide free legal assistance to low-income, limited English-speaking immigrants facing domestic violence, including assistance with protective orders, immigration, divorce, and other family law issues.

The multilingual Asian Language Legal Intake Project (ALLIP), which assists nearly 8,000 callers each year, added a new language when the Hindi helpline was launched in June 2018.

Every year, we aid over 500 abuse survivors, mostly women and children. This past year, we successfully launched the Domestic Violence Restraining Order Clinic, and served 526 clients, of which 392 were domestic violence and/or sexual assault survivors.

Working with both local and national community partners, Advancing Justice-LA assists nearly 8,000 immigrants with citizenship and immigration applications annually. Our citizenship team remained extremely busy as many immigrants sought to naturalize to protect themselves and their families. In fact, we expanded our Orange County team in 2018 to meet the growing need of clients requesting support to navigate the naturalization process. Almost 500 of the clients we assisted with citizenship and immigration matters last year were either in detention or had upcoming removal hearings. We also submitted more than 80 DACA renewals.

For our many clinics and workshops, Advancing Justice-LA relies on over 750 wonderful volunteers – interns, fellows, law clerks, and pro bono attorneys – who share their time, expertise, and bilingual skills with us and with our clients. Pro bono attorneys are also instrumental to the success of our litigation cases and other projects.

For more info about all of our programs, visit advancingjustice-la.org.



\$543,750

saved in citizenship fees for low-income immigrants, through successful fee waivers



251

DACA applicants assisted



**BRINGING LAWSUITS
THAT PROTECT, ENFORCE,
AND EXPAND THE RIGHTS
OF LOW-INCOME AND
IMMIGRANT COMMUNITIES.**

Impact Litigation



Advancing Justice-LA litigates a range of civil rights cases, with a focus on low-wage worker issues, human trafficking, immigrants' rights, voting rights and education rights.



11 states

We have cultivated relationships with 11 states through our AANHPI Voting Rights Partnership which include:

Arizona, Ohio, North Carolina, Washington, Michigan, Georgia, Illinois, Hawaii, Minnesota, Nevada and Oregon.



We push back against attempts to implement xenophobic and exclusionary policies that discriminate on the basis of faith, national origin, and immigration status.

Advancing Justice-LA continues to challenge ICE's unlawful arrests and prolonged detention of Vietnamese refugees through a class action lawsuit. We are also seeking an end to indiscriminate ICE raids and unwarranted detention targeting the Cambodian community through a federal lawsuit with Asian Americans Advancing Justice - Asian Law Caucus. We will continue to fight back against these unlawful practices and advocate for the rights of our plaintiffs.

Alongside our partners, we have mobilized against the City of Los Angeles' Countering Violent Extremism (CVE) and Preventing Violent Extremism (PVE) programs, successfully convincing Los Angeles to end its CVE program, which would have subjected thousands of people to potential violations of their civil rights and liberties. We continue to fight against CVE and PVE initiatives statewide.

Access to the voting booth is one of the only mechanisms available for citizens to influence the government policies that impact them. We obtained intervention against conservative attacks against the California Voting Rights Act (CVRA), which would have been disastrous for communities of color throughout the state heading into the November 2018 elections.

Finally, we are defending affirmative action on behalf of Asian American and Pacific Islander applicants and students to Harvard University. We believe it is critical to defend race-conscious holistic admissions policies, which are separate and distinct from any quotas on, or discrimination against, Asian Americans.

For more info about all of our programs, visit advancingjustice-la.org.



Policy Advocacy & Research

PROMOTING DEMOCRATIC PARTICIPATION AND ADVANCING CIVIL AND IMMIGRANT RIGHTS THROUGH RESEARCH, ADVOCACY, AND MOBILIZATION.

Advancing Justice-LA advocated for the rights of immigrant and Asian American communities to access health care and other critical services, in-language resources at the polls, higher education, and more.

In response to the Trump administration's proposed changes to current public charge determination, Advancing Justice-LA collaborated with its network of community partners to inform and mobilize community outreach and advocacy in multiple languages to AANHPI communities. We created fact sheets in eight languages and solicited over 1,000 public comments in response to the proposed public charge regulations.

We continued to fight the weakening of the Patient Protection and Affordable Care Act (ACA) and supported expanding coverage to more uninsured through outreach, education, enrollment and advocacy in federal, state and local health programs, including Covered California, Medi-Cal and local safety net programs to ensure that all community members thrive and can live healthy lives.

Advancing Justice-LA's groundbreaking demographic research reports are meant to increase knowledge, foster dialogue, and reevaluate policies about AANHPI communities. Last year, we released a new report *Transforming Orange County: Assets and Needs of Asian Americans & Native Hawaiians and Pacific Islanders*, which highlighted some of the major demographic shifts affecting the third-most populous county in California and sixth-

most populous in the U.S. AANHPIs now comprise 21% of the county's 3 million residents, transforming it from a predominantly homogeneous, White, and suburban county into one that is highly diverse and urbanizing.

As Advancing Justice-LA gears up to lead its fourth campaign for upcoming Census 2020, it has engaged community-based organizations as trusted messengers and leaders to outreach to hard-to-reach populations and ensure that AANHPI communities are counted. We play a leadership role in the Census Policy Advocacy Network's (CPAN) Executive Committee to advance AANHPI census policy concerns, and have advocated the state legislature to provide additional funding for 2020 Census outreach and planning.

We believe that access to education is a human right not reserved for those who can afford it. In 2018, our College for All Coalition was able to confirm that California's reinvestment in public higher education led to an increase in applications and admissions of historically oppressed students. Additionally, we joined partners statewide to achieve legislative wins in student hunger, bullying and harassment, undocumented student financial aid access and protections, financial aid information and support, and community college access and retention.

For more info about all of our programs, visit advancingjustice-la.org.



DEVELOPING INDIVIDUAL, ORGANIZATIONAL, AND COMMUNITY LEADERSHIP FOR A MULTIRACIAL AND ACTIVELY ENGAGED SOCIETY.



Leadership Development

Advancing Justice-LA's leadership programs are building a network of engaged community members to help build a movement that positively impacts their families, schools, and neighborhoods.

Our Youth and Parent Leadership Development (YPLD) program served over 1,600 youth and parents at 11 sites across Los Angeles in 2018, with more than 600 students, parents, and teachers participating in leadership development training, community engagement, and arts and social justice activities.

Last year, YPLD added an additional Dream Center at Alhambra High School. This center joined the first-of-its-kind center established at Lincoln High School as a safe space for undocumented and other immigrant students to seek support, including wrap-around services and leadership development training.

For more info about all of our programs, visit advancingjustice-la.org.



600+

students, parents, and teachers participated in training, community engagement, and activities through Advancing Justice-LA



1,639

youth and parents served through our Youth and Parent Leadership Development program



2018 Board & Council Members

Board of Directors

EXECUTIVE COMMITTEE

CHAIR

Nita Song
President & Chief Executive Officer
IW Group, Inc.

FIRST VICE CHAIR

Marie Tan
President
Marie Tan, CPA, A Prof. Corporation

VICE CHAIR

William Lew Tan, Esq.
President
Tan & Sakiyama, A Prof. Corporation

VICE CHAIR

Hon. Casimiro U. Tolentino
Administrative Law Judge State of California (Retired)

SECRETARY

Shirley S. Cho, Esq.
Partner
Pachulski Stang Ziehl & Jones LLP

TREASURER

Vincent M. Gonzales, Esq.
Senior Environmental Counsel
Southern California Gas Company

CO-CHAIR, EXECUTIVE ADVISORY COUNCIL

Martin V. Lee, Esq.
Partner
Famco Investments

CO-CHAIR, EXECUTIVE ADVISORY COUNCIL

John S.C. Lim, Esq.
Partner
LimNexus, LLP

CO-CHAIR, EXECUTIVE ADVISORY COUNCIL

Sandy Sakamoto, Esq.
Partner
LimNexus, LLP

EXECUTIVE DIRECTOR

Stewart Kwoh, Esq.
President & Executive Director
Asian Americans Advancing Justice - Los Angeles

EXECUTIVE MEMBERS AT LARGE

Gloria Lee, Esq.
Partner
Rutan & Tucker, LLP

Vivian Long
Director of Programs
Long Family Foundation

Gilbert Tong
First Vice President - Wealth
Management Resident Director
Merrill Lynch, Pierce, Fenner & Smith Inc.

MEMBERS AT LARGE

Paul S. Chan, Esq.
Partner
Bird, Marella, Boxer, Wolpert, Nessim, Dooks,
Lincenberg & Rhow

Andrew Cheng
Partner
Gibson, Dunn & Crutcher LLP

Andrea D. Cherng
Chief Marketing Director
Panda Restaurant Group, Inc.

Anjan Choudhury, Esq.
Partner
Munger, Tolles & Olson LLP

Peter Y. Huh
President & Chief Executive Officer
Pacific American Fish Company, Inc.

Beong-Soo Kim, Esq.
Vice President & Assistant General Counsel
Kaiser Foundation Health Plan, Inc.

Joseph K. Kim, Esq.
Partner
O'Melveny & Myers LLP

Kathleen C. Kim, Esq.
Professor of Law
Loyola Law School

Katherine H. Ku, Esq.
Partner
Wilson Sonsini Goodrich & Rosati

Thomas Lee, Esq.
Senior Counsel
Wells Fargo

Jade Leung, Esq.
Senior Corporate and Employment Counsel
Entertainment Partners

Kevin Masuda, Esq.
Partner
Gibson, Dunn & Crutcher LLP

Manisha Merchant, Esq.
Executive Vice President & Division General Counsel
Banc of California

Olivia Samad, Esq.
Senior Attorney
Southern California Edison

Christine Song
Investment Analyst
Capital Guardian Trust Company

Timothy Tang
Business Development
Alibaba Cloud

Mini Timmaraju
Executive Director, External Affairs
Comcast / NBC Universal

Betty Rengifo Uribe, Ed.D.
Executive Vice President
California Bank & Trust

Yoko Yagi, Esq.
Senior Corporate Counsel
The Home Depot

Jeffrey S. Yang, Esq.
Vice President & Corporate Real Estate Counsel
MUFJ Union Bank, N.A.

Jack S. Yeh, Esq.
Partner
Sidley Austin, LLP

Executive Advisory Council

CO-CHAIR

Martin V. Lee, Esq.
Famco Investments

CO-CHAIR

John S.C. Lim, Esq.
LimNexus, LLP

CO-CHAIR

Sandy Sakamoto, Esq.
LimNexus, LLP

PRO-BONO ADVISORY COUNCIL LIASON

Wendy Chang, Esq.
Hinshaw & Culbertson LLP

MEMBERS AT LARGE

Fred Abdelnour
Enterprise Rent-A-Car

H. James Abe, Esq.
Alston & Bird LLP

Paul K. Abe
Union Bank

Celeste M. Alleyne
Microsoft

Michael Brennan

Samona Caldwell
State Farm Insurance Companies

Stewart Chang, Esq.
Whittier Law School

Danny Chen, Esq.
Taiwanese American Lawyers Association

James C. Chen, Esq.
13 East Realty, Inc.

Lily Lee Chen

Raymond K. Cheng
Cedars-Sinai Medical Center

Andrew Cherng
Panda Restaurant Group, Inc.

Clara Chiu
AARP Foundation

William C. Choi, Esq.
Rodriguez, Horii, Choi & Cafferata LLP

Aimee M. Contreras-Camua, Esq.
Sidley Austin LLP

Cornelia H. Dai, Esq.
Hadsell Stormer & Renick LLP

LaVerne G. Davis

Daniel H. Deng, Esq.
Law Offices of Daniel H. Deng

Hon. Michael F. Eng
Eng & Nishimura

Alex H. Fukui, Esq.
California Bank & Trust

Leslie Furukawa, Esq.
Gomez & Furukawa

Lori Gage
Hitachi, Ltd.

Albert Giang, Esq.
Caldwell Leslie & Proctor, PC

Mónica Gil
NBCUniversal Telemundo Enterprises

Garrett Gin
Bank of America

Terri Hernandez Rosales
NBC 4 Southern California

Ming Chen Hsu
J.T. Tai & Co. Foundation

Bryan Ikegami, Esq.
Kirkland & Ellis, LLP

Irene Hirano Inouye

Ryan Iwasaka, Esq.
Japanese American Bar Association

Roy Jasso

Dixie Johansen
California Teachers Association

Don Jue

Robin Jung, Esq.
*Asian Pacific American Bar Association
of Los Angeles County*

Brian Kang, Esq.
*Korean American Bar Association
of Southern California*

Jeannie Kim, Esq.
Orange County Asian American Bar Association

Patricia A. Kinaga, Esq.
LTL Attorneys LLP

Arnold Kleiner

Jonathan B. Ko, Esq.
Skadden, Arps, Slate, Meagher & Flom LLP

Joanna M. Kong, Esq.
Vero Law Group

Yul Kwon
Facebook

Judy M. Lam, Esq.
Kumagai Law Group

Philip H. Lam, Esq.
Los Angeles City Attorney's Office

C. David Lee, Esq.
Munger, Tolles & Olson LLP

Stephen C. Lee, Esq.
BP America Inc.

Vincent S. Loh, Esq.
Michelman & Robinson, LLP

Warren R. Loui, Esq.
Winston & Strawn LLP

Gail C. Louis, Esq.
Automobile Club of Southern California

John K. Ly, Esq.
Liang Ly LLP

Noel Massie
United Parcel Service

Nancy Matsui
American Airlines

Timothy McCallion

Diane Medina

Debra Nakatomi
Nakatomi & Associates

Daphne Ng
Southern California Edison

Tam Nguyen
Advance Beauty College

Purvi Patel, Esq.
South Asian Bar Association of Southern California

Zathrina Perez, Esq.
Philippine American Bar Association

Edward Perron, Esq.
Pillsbury Winthrop Shaw Pittman LLP

Asheesh Puri, Esq.
South Asian Bar Association of Southern California

Carol W. Quan
Los Angeles County Assessor's Office

Cristina M. Regalado
The Workshop

Panida Rzonca, Esq.
Thai American Bar Association

Teresa Samaniego
ABC7

Martha Saucedo
AEG

Bill H. Seki, Esq.
Seki, Nishimura & Watase, LLP

Ralph Shapiro
Avondale Investment Partners

Eileen A. Shibata, Esq.
Toyota Motor Sales, U.S.A., Inc.

Anne Shen Smith

Carmen J. Smith
Walt Disney Imagineering

Mimi R. Song
Superior Grocers

Brian A. Sun, Esq.
Jones Day

Hoyt Y. Sze, Esq.
Prospect Medical Holdings, Inc.

Donald Tang
Tang Media Partners

Tuan V. Uong, Esq.
Reed Smith LLP

Peter R. Villegas
The Coca-Cola Company

Emily Wang
East West Bank

Shirley Wei, Esq.
Southern California Chinese Lawyers Association

Dora Wong
The Coca-Cola Company

Jai Lee Wong

Kent Wong
UCLA Center for Labor Research and Education

Felix T. Woo, Esq.
Dentons

Michael K. Woo
*California State Polytechnic University, Pomona,
College of Environmental Design*

Yoko Yagi, Esq.
The Home Depot

Edward V. Yang
iSoftStone Inc.

Joong-Nam Yang
Koreatown Plaza

Stan K. Yang, Esq.
The Yang Law Group

Clayton K. Yeung
Nielsen

Alice Yuan, Esq.
j2 Global

Orange County Executive Advisory Council

CO-CHAIRS

Gloria Lee, Esq.
Rutan & Tucker

Yoko Yagi, Esq.
The Home Depot

Jay H. Im, Esq.
K&L Gates

Jennifer Ishiguro, Esq.
Gateway One Lending & Finance, LLC

Josh Ji, Esq.
Greenberg Gross LLP

Amrita Jolly, Esq.
*Fragomen, Del Rey, Bernsen
& Loewy LLP*

Katie Kalvoda
G3 Ventures

John Kang, Esq.
Kang Spanos & Moos LLP

Thomas Kao, Esq.
Keller/Anderle LLP

Rochelle Karr, Esq.
O'Melveny & Myers LLP

Benjamin Kim, Esq.
*Allen Matkins Leck Gamble
Mallory & Natsis LLP*

Daniel Kim
MerchLabs

David Kim, Esq.
Niagara Water

Eugene Kim, Esq.
Gresham Savage

Eugene Kim, Esq.
Ingram Micro Inc.

Johanna Kim, Esq.
Kerymen LLC

Kenneth Kim, M.D.
WCCT Global

Sora Kim, Esq.
Portfolio

Adrienne Lee, Esq.
Sheppard Mullin LLP

Eduardo Lee
Wahoo's Fish Tacos

Suzu Lee, Esq.
MFlex

Vivian Long
Long Family Foundation

Rondine Macadaeg, Esq.
Elevate Tomorrow

Tam Nguyen
Advance Beauty College

Teddy Nguyen, Esq.
Liberty Dental Plan

Tram-Anh Nguyen, Esq.
Microvention, Inc.

Ginger Ong

James Pack, Esq.
*Fragomen, Del Rey, Bernsen
& Loewy LLP*

John Paik, Esq.
Knobbe Martens

Angela Pak, Esq.
*Ogletree, Deakins, Nash,
Smoak & Stewart, P.C.*

Daniel Park
Mofe, Inc.

Soo Park, Esq.
Fisher Phillips

Sunny Park, M.D.
Sunny Park Facial Plastic Surgery

Wade Pyun, Esq.
US Bankcorp

Carol Su, Esq.
Jones Day

Ryan Tanaka, J.D.
Cypress Communities LLC

Ajit Thind, Esq.
Rutan & Tucker

Jack Toan
Wells Fargo

Louise Truong, Esq.
Buchalter

Mei Tsang, Esq.
Umberg Zipser

Jenny Wang, Esq.
MerchSource

Natalie Wang, Esq.
Alorica

Tony Wang, Esq.
O'Melveny & Myers LLP

Ruchi Warriar, MBA
Tarsadia Foundation

Elaine Wu
WHGC PLC

Dennis Yeoh, Esq.
VIZIO

Mike Yim
Quantum Capital Partners

MEMBERS AT LARGE

Seung Baik, Esq.
Agility Fuel Solutions

Howard Chu, Esq.
Greenberg Traurig LLP

Lillian Chu, Esq.
Manatt, Phelps & Phillips LLP

Brian Chuan
South Coast Plaza

Joseph Cruz, Esq.
Ernst & Young LLP

Yimeng Dou, Esq.
Kirkland and Ellis LLP

John Fujii, Esq.
Silver & Wright LLP

Mark Furuya, Esq.
Clark Construction Group

Robert Gandy, Esq.
Severson & Werson

Thai Hoang, CFA CFP
Wells Fargo

Anita Hsu, Esq.
MBK Real Estate Companies

Jerry Huang, Esq.
VIZIO

Orange County Community Advisory Council

CO-CHAIRS

Mary Anne Foo, M.P.H.
OCAPICA

Dr. Linda Trinh Vo
University of California, Irvine

MEMBERS AT LARGE

Ellen Ahn, J.D., M.S.W.
Korean Community Services

Hussam Ayloush, MBA
CAIR-LA

Katie Brazer
CHIRLA

Jury Candelario
APAIT

Dr. Stewart Chang
Whittier Law School

Ellen Chen
ENO

Honorable Halim Dhanidina
The Los Angeles County Superior Court

Susie Park Dickman, Esq.
Whittier Law School

Leigh Ferrin, Esq.
Public Law Center

Caroline Hahn, Esq.
Law Office of Caroline R. Hahn

Miguel Hernandez
Orange County Congregation
Community Organization

T. Linh Ho, Esq.
Superior Court of California,
County of Orange

Ken Inouye, CPA
JAACL & OC Human Relations Commission

Isabel Kang
Korean Resource Center

Cheryl Kang Prout, Esq.
Orange County Korean American
Bar Association

Alexander C. Kim, MBA
Three Kings Public Affairs

Janine Kim, Esq.
Chapman Law School

Jeannie Kim, Esq.
Orange County Asian American
Bar Association

Lisa Kim, Esq.
California Department of Justice
- Privacy Enforcement
and Protection Unit

Jennifer Lee Koh, Esq.
Western State College of Law

Annie Lai
University of California,
Irvine School of Law

Christine Nguyen, Esq.
Vietnamese American Bar Association
of Southern California

Tricia Nguyen, M.P.H.
Southland Integrated Services, Inc.

Dr. Eliza Noh
California State University, Fullerton

Jane Ka'ala Pang
Pacific Islander Health Partnership

Victor Kaiwi Pang
Pacific Islander Health Partnership

Frank Quevado

Vattana Peong, M.P.H.
The Cambodian Family
Community Center

Shakeel Syed
Orange County Communities
Organized for Responsible
Development

Sister Thuy Tran, CSJ
St. Joseph Hospital

Nate Watanabe, Esq.
Orange County Asian American
Bar Association

Pro Bono Advisory Council

CO-CHAIRS

Esther Ro, Esq.
Morgan, Lewis & Bockius LLP

Steven K. Yoda, Esq.
Walzer Melcher LLP

STEERING COMMITTEE

Steve Chiu, Esq.
Manatt Phelps & Phillips LLP

Christopher B. Yeh, Esq.
Amazon Web Services

David C. Yang, Esq.
Hawkinson Yang LLP

MEMBERS AT LARGE

Jennifer Chang, Esq.
Mayer Brown LLP

Ronald Cheng, Esq.
O'Melveny & Myers LLP

Huilin Cornell, Esq.
Morrison & Foerster

Julia Fauzia-Whatley, Esq.
WilmerHale

Howard Hou, Esq.
Bank of America

Ziwei Hu, Esq.
Boies Schiller Flexner LLP

Helen Hwang, Esq.
Covington & Burling LLP

Robin Jung, Esq.
Dykema Gossett PLLC

Jessica Jung, Esq.
McDermott Will & Emery

Nicole Kim, Esq.
Gibson, Dunn & Crutcher LLP

Seong Kim, Esq.
Seyfarth Shaw

Vivian Kim, Esq.
Hanmi Bank

Jimmy Kwun, Esq.
Foley & Lardner

Jenna Le, Esq.
Snell & Wilmer

Jennifer Le, Esq.
Sheppard Mullin

Christopher Lee, Esq.
Seyfarth Shaw

Edward Lew, Esq.
The Walt Disney Company

Savir Punia, Esq.
Drinker Biddle & Reath LLP

Sandhya Ramadas, Esq.
The Walt Disney Company

Bryan Rhie, Esq.
Duane Morris LLP

Naeun Rim, Esq.
Bird Marella PC

Lindsey Shi, Esq.
Kirkland & Ellis LLP

Jonathan Shih, Esq.
Latham & Watkins LLP

Alexander Su, Esq.
LimNexus

Farah Tabibkhoei, Esq.
Reed Smith LLP

Kevin Tsai, Esq.
Akin Gump Strauss Hauer & Feld LLP

Nilay Vora, Esq.
The Vora Law Firm

Karin Wang, Esq.
UCLA School of Law

Stacey Wang, Esq.
Holland & Knight LLP

Jasmin Yang, Esq.
Lewis Brisbois



2018 Donors & Supporters*

\$1,000,000 +

California Community Foundation ('15-'19)
 California Department of Social Services ('18-'19)
 The California Endowment ('17-'20)
 The James Irvine Foundation ('17-'20)
 Marguerite Casey Foundation ('15-'20)

New Americans Campaign (funded by Carnegie Corporation of New York, Democracy Fund, Evelyn & Walter Haas, Jr. Fund, Grove Foundation, Houston Endowment, JPB Foundation, Open Society Foundations, Rockefeller Brothers Fund, Sapelo Foundation, and Wallace H. Coulter Foundation) (in collaboration with Immigrant Legal Resource Center) ('17-'19)

The State Bar of California – Legal Services Trust Fund Program ('17-18)
 Wallace H. Coulter Foundation ('12-'20)
 Walter & Shirley Wang ('13-'18)

\$500,000 – \$999,999

California Health Benefit Exchange (Covered California) ('17-'19)
 The California Wellness Foundation ('16-'19)

Cyrus Chung Ying Tang Foundation ('14-'19)
 Long Family Foundation ('13-'18)

United States Department of Justice – Office on Violence Against Women ('17-'20)
 Weingart Foundation ('17-'20)

\$250,000 – \$499,999

California Governor's Office of Emergency Services ('17-'19)
 County of Los Angeles - Department of Public Health, Office of Women's Health ('17-'19)
 County of Los Angeles Public Library (in collaboration with CARECEN) ('18-'21)

Evelyn and Walter Haas, Jr. Fund ('16-'19)
 Ford Foundation, Building Institutions and Networks (BUILD) Initiative (in collaboration with Asian Americans Advancing Justice – Asian Law Caucus) ('18-'21)

J.T. Tai & Co. Foundation
 Orange County Community Foundation ('16-'19)
 United States Department of Homeland Security – United States Citizenship and Immigration Services ('17-'19)

\$100,000 – \$249,999

Bank of America ('17-'19)
 Blue Shield of California Foundation
 Carnegie Corporation of New York ('17-'18)
 College Futures Foundation ('17-'18)
 DentaQuest Foundation ('17-'19)
 Dwight Stuart Youth Fund ('17-'19)

Edison International ('17-'19)
 Equal Justice Works ('18-'20)
 I.S. Wong Foundation ('13-'18)
 The James Irvine Foundation (in collaboration with National Employment Law Project) ('17-'19)
 Kay Family Foundation ('17-'21)

NEO Philanthropy, Inc. ('17-'18)
 Panda Restaurant Group, Inc.
 The Rose Hills Foundation ('17-'19)
 Royal Thai Consulate General ('17-'19)
 Sidley Austin LLP
 Skadden Fellowship Foundation ('18-'20)
 United Way of Greater Los Angeles ('17-'19)

\$50,000 – \$99,999

California Collaborative for Educational Excellence ('17-'19)
 Kaiser Foundation Hospitals ('18-'19)
 Mexican American Legal Defense and Educational Fund (MALDEF)

The Ralph M. Parsons Foundation ('17-'18)
 RISE for Boys and Men of Color (in collaboration with Asian Americans Advancing Justice – AAJC) ('18-'19)
 Stuart Foundation ('17-'18)

United States Department of Justice – Office for Victims of Crime (in collaboration with Thai Community Development Center) ('16-'19)
 Unitarian Universalist Veatch Program at Shelter Rock ('17-'19)
 Wells Fargo Foundation ('18-'19)

\$25,000 — \$49,999

Advancement Project ('18-'19)
American Association of Retired Persons (AARP)
Annenberg Foundation ('17-'19)
Anonymous
Associates Committee ('18-'20)
California Coverage & Health Initiatives ('17-'18)
Citi Community Development (in collaboration with The Mayor's Fund for Los Angeles) ('18-'19)

Comcast/NBCUniversal
East West Bank
First 5 LA ('17-'18)
The Green Foundation ('18-'19)
Jewish Community Foundation of Los Angeles ('17-'19)
Joseph M. & Denise Lumarda ('14-'18)
Katherine H. Ku, Esq. ('15-'19)

National Education Association (in collaboration with California Faculty Association)
Pacific American Fish Company, Inc.
Sierra Health Foundation ('17-'18)
Southern California Gas Company
Anne Shen Smith ('15-'19)♦
The Walt Disney Company & ABC7

\$10,000 — \$24,999

Anschutz Entertainment Group, Inc.
Bird, Marella, Boxer, Wolpert, Nessim, Dooks, Lincenberg & Rhow
Borealis Philanthropy Foundation, (in collaboration with Asian Americans Advancing Justice – Asian Law Caucus) ('18-'19)
California Pan-Ethnic Health Network ('17-'18)
Capital Group
Cathay Bank
Cedars-Sinai
Paul S. Chan, Esq. & Kim Y. Gohata, Esq.♦
The Coca-Cola Company
Council of Korean Americans

Enterprise Rent-A-Car
Friends of Stewart & Pat Kwoh: Wendy Chang, Sally Lew, & Cathy Choi
The Home Depot Foundation
Hsu Hwa Chao Foundation ('18-'19)
IW Group, Inc.
Kaiser Permanente
KEBOK Foundation - At the request of Kathleen Kim♦
Los Angeles County Board of Supervisors – At the request of the Los Angeles County Arts Commission ('18-'19)
Macy's
Manatt, Phelps & Phillips LLP

Microsoft
Munger Tolles & Olson LLP
Nielsen
Security & Rights Collaborative, a Proteus Fund initiative (in collaboration with Asian Americans Advancing Justice – Asian Law Caucus) ('16-'19)
Shapiro Family Charitable Foundation
Southern California Edison
Marie & Chor Chai Tan♦
Tarsadia Foundation
Union Bank Foundation ('17-'18)
Wilson Sonsini Goodrich & Rosati Foundation

\$5,000 — \$9,999

AT&T
The Annie E. Casey Foundation
Bank of America Charitable Foundation – At the request of Gilbert Tong
B.P. Corporation North America Inc. – At the request of Stephen C. Lee, Esq.
California Bank & Trust
Carlson & Jayakumar LLP
Michael C. F. Chan and Associates, Inc.
Charter Communications
Shirley S. Cho, Esq. ('15-'19)
William Choi
Anjan Choudhury, Esq.
County of Los Angeles, Office of Supervisor Hilda Solis
County of Los Angeles, Office of Supervisor Mark Ridley-Thomas
First 5 LA
Vincent Gonzales, Esq.♦
ILWU Local 13
Peter and Jihee Huh♦

Koreatown Plaza
Judy Lam
Latham & Watkins LLP
Martin Lee, Esq.♦
William Lew Tan, Esq.♦
John Lim♦
LimNexus LLP
Vivian Long - Through the Long Family Foundation♦
Wanda and Ronald Low
Elwood and Crystal Lui♦
Beong-Soo Kim♦
Arnie Kleiner♦
Nathan Kwoh
Los Angeles City Councilmember David Ryu
Adeline and Robert Mah
Mayer Brown LLP
Morgan, Lewis & Bockius LLP
Patricia Neville♦

New Americans Campaign (in collaboration with Public Law Center) ('17-'18)
O'Melveny & Myers LLP
Margaret Iwanaga Penrose♦
Mayor Richard J. Riordan
Oliva Samad, Esq.♦
Sandra Sakamoto, Esq. & Nolan Maehara, DDS♦
Security & Rights Collaborative, a Proteus Fund Initiative ('17-'18)
Seyfarth Shaw LLP
Jack and Mary Ellen Shu♦
Skadden, Arps, Slate, Meagher & Flom LLP
Nita Song♦
South Asian Bar Association of Southern California – Public Interest Foundation ('17-'18)
George and Brad Takei♦
Hon. Mark Ridley-Thomas♦
Gilbert Tong♦
UCLA



United States Department of Justice
 – Office for Victims of Crime (in
 collaboration with Legal Aid
 Foundation of Los Angeles) ('17-'18)

Verizon Wireless
 The Westin Bonaventure Hotel & Suites
 Karen B. Wong♦

Kent and Jai Wong♦
 Jack Yeh

\$2,500 — \$4,999

AirBNB
 Brian and Lynn Arthurs – In Appreciation
 to Mary Ellen and Jack Shu, In Honor of
 Pat and Stewart Kwoh, and In Memory
 of Beulah Quo and Edwin Kwoh
 California Teachers Association
 County of Los Angeles, Office of
 Supervisor Janice Hahn
 County of Los Angeles, Office of
 Supervisor Sheila Kuehl
 Crowell & Moring LLP
 DLA Piper US LLP

Gomez & Furukawa
 Hitachi, LTD
 Jones Day
 Adam & Rochelle Karr ('17-'19)
 Kirkland & Ellis LLP
 Leadership Education for Asian Pacifics Inc.
 Jason R. Lee
 Jade Leung, Esq.
 Patrick & Stella Liang
 Littler Mendelson Foundation

Manufacturers Back
 Nakatomi & Associates ('18-'19)
 Archer Norris
 Pachulski Stang Siehl & Jones LLP
 Paramount Pictures
 Rodriguez, Horii, Choi & Cafferata LLP
 SkyRose Chapel Foundation ('17-'19)
 Dr. Richard & Mrs. Ivy Sun
 U.S. Bank
 Walzer Melcher LLP
 WilmerHale

\$1,200 — \$2,499

Advancement Project
 Asian Pacific American Bar Association
 of Los Angeles County
 Asian Pacific American Women Lawyers Alliance
 Asian American/Pacific Islanders
 in Philanthropy
 Banc of California N.A.
 Center for Asian Americans United
 for Self Empowerment
 County of Los Angeles, Office of
 Supervisor Kathryn Barger
 Crowell & Moring LLP
 Duane Morris
 East West Players
 Eng & Nishimura
 Cheryl K. Fair
 Fragomen Worldwide
 Friends of Don Jue
 Leslie Furukawa, Esq. – In honor of Karin Wang
 Gibson, Dunn & Crutcher LLP
 Girardi Keese
 Laura Goddard
 Rebecca Harper

Hawkinson Yang LLP
 Hinshaw & Culbertson LLP
 Thai Hoang
 Holland & Knight LLP
 Japanese American Bar Association
 Japanese American National Museum
 Katie Kalvoda
 Susan Kim
 Korean American Bar Association
 of Southern California
 Joseph & Jacqueline Kirshbaum Memorial
 Fund of Liberty Hill Foundation ('17-'19)
 Steven, Jing and Audrey Kwoh
 L.A. Care
 Thomas Lee, Esq.
 Liberty Hill Foundation
 Little Tokyo Service Center
 Manisha Merchant, Esq.
 Arthur Ong, Amanda Ong & Ginger Sun
 Orange County Asian American Bar Association
 Philippine American Bar Association
 Reed Smith LLP
 Chiyo Imai Rowe

SABA-Southern California & SABA-
 Public Interest Foundation
 Alette & Noel Segerstrom
 Southern California Chinese
 Lawyers Association
 Southern California Public Radio
 StoneTapert Insurance Services
 Taiwanese American Lawyers Association
 Tan & Sakiyama, A Prof. Corp.
 Hon. Casimiro Tolentino
 UCLA Government and Community Relations
 UCLA Labor Center
 UCLA Law School & The David J. Epstein
 Program in Public Interest Law and Policy
 Urban Foundation
 VALIC
 The Walt Disney Company – At the request
 of Tommy Lam & Susan Lin
 Jonathan R. Wong
 Yoon Law, APC
 Nancy Yoshida and James Guion, Kiku Lisa
 Yoshida, Mark Yoshida and Binc Ngoc Do
 – In memory of H.C and Helen Yoshida

In-Kind

Home Depot
 LimNexus LLP
 South Coast Plaza

\$500 — \$1,199

Carmen Alonzo	Grace Hu	Nanxi Liu
Anonymous	iDepo Reporters	Mark and Cathy Louchheim – In honor of Patricia and Stewart Kwoh
Jamie & Eugene Ah	ILWU Local 63	Warren R. Loui, Esq.
Kenneth W. Babcock & Hon. Kathleen E. O’Leary	ILWU Local 94	Aileen Almeria Louie
Bang Golf, Inc.	Nicole A. Inouye	Nancy Lu
Best Best Krieger LLP	John Kang, Esq.	David Lung
Bryan Cave LLP	Diana & Thomas Kao	Robert Matsuishi, Esq.
Michael Brennan	Benjamin Kim, Esq.	Bill Maurer
Tim Brown	Edward & Lisa Kim	Richard May
Michiyo Burkart	Gloria Kim	MBK Real Estate LLC
Calvin Chai-Onn	Jean Kim	Tim J. Midgley
Judy Chang	Joseph Kim, Esq.	Lindsay and Alethea Monge
Marty Chao & Jean Chung (*17-’18)	Lisa Kim	Steven M. Nakasone, Esq.
Amy I. Chen, Esq.	Lisa B. Kim, Esq.	Cary and Linda Nishimoto
Lily Lee Chen	Dr. Kenneth & Johanna Kim, Esq.	Linda Nguyen
Michael T. Chen, M.D.	Sora Kim	Tam Nguyen
Steve K. Chen	Elaine King, M.D.	Natolie Ochi
Andrew Cheng	Jonathan B. Ko, Esq.	Glenn Omatsu
Deborah Ching & Mark Mayeda	John Kobara	Wendy On
Clara M. Chiu	KTGY Architecture + Planning	Jackson Pai, Esq.
Herman and Patty Chiu	Christie Ku	Angela Pak
Carol Choi	Suzanne Lam	Kevin Park
Eunha Choi & Josh Crowell	Joseph P. Le, Esq.	Frank J. Quevedo
Marcia Choo	Duncan David Lee, Esq.	Sara Sadhwani
Chiung Sally Chou, Ph.D.	Ed & Michal Lee	Keiko Sakamoto
Lillian Chu, Esq.	The Lee Family – In honor of Charlotte Chang & Nikhil Deshmukh	Wesley & Roxanne Sato
Jikja Chung	May Lee	Anne Shih
Gilbert Cisneros	Michael Lee & Lori Lee Yamato	Hye Won Shin
Dale Cochran	Randall R. Lee Esq.	Brian Sun
Faith Cookler	Audrey T. Lee-Sung	Jean Tanaka
Hon. Halim Dhanidina	Nana Lei	Lewis & Stephanie Tchong
Bob & Geena Dougherty	Triet Leminh	Kim Tran
JR Dzubak	Russel Leong	Mai Tran
Nancy Eng	Gabrielle Lessard	Dennis Uyemura
Chi-Fun Cindy Fan	Emily Leung	Linda Trinh Vo
Seth & Remi Frolichman	Ivan Leung	Karin Wang & Jeff Matsuda
Warren & Li’i Furumoto	Edward Lew, Esq.	Stephanie Wang & Chao H. Sun
Robert Gin	Sally Lew – In honor of Karin Wang	Jeren Wei
Amadeo Gamboa	Susan & Canyon Lew	Calista Wu, Esq.
Mukesh P. Gandhi	Zhihai Li	Edna Yan
Kathy Gao	Kevin Lin	Ellen Yang (*17-’18)
Oliver & Austin Graham	Susan Lin	Clayton K. Yeung & Sam E. Lucas
Cathy Han	Vida C. Lin	Mark Yoshida & Bich Ngoc Do – Partially in honor of Karin Wang and Stewart and Pat Kwoh
James E. Herr	Bonaparte & Deborah Liu	
Anita Hsu, Esq.		

◆ Circle of Justice Founders Fund Seed Funders

*Parenthetical references indicate multi-year gifts. Multi-year donors are listed in the category that reflects their cumulative gift. We strive to be as accurate as possible with our donor listings. If we made an error, please let us know by calling (213) 977-7500 or emailing donate@advancingjustice-la.org.